

Metadherin Monoclonal Antibody

Description

| | |
|--------------------------------|---|
| Product type | Antibody |
| Code | BT-MCA4538 |
| Host | Mouse |
| Isotype | Mouse IgG1 |
| Size | 100μL, 50μL |
| Immunogen | Purified recombinant fragment of human Metadherin expressed in E. Coli. |
| Mol wt | 64kDa |
| Species reactivity | Human |
| Clonality | Monoclonal |
| Recommended application | WB,IHC,FCM |
| Concentration | N/A |
| Full name | N/A |
| Synonyms | 3D3;AEG1;LYRIC;MTDH |

This product is for research use only, not for use in human, therapeutic or diagnostic procedure.

Background

Metadherin (Metastasis adhesion protein), also known as MTDH, LYsine-RIch CEACAM1 co-isolated (LYRIC), is a novel protein that localizes with the tight junction proteins ZO-1 and occludin in polarized epithelial cells. At the tight junction, it acts not as a structural component, but is rather recruited during the maturation of the tight junction complex. Metadherin is overexpressed in breast cancer tissue and breast tumor xenografts, while much lower levels are expressed in normal breast tissue. Metadherin binds to lung vasculature, one of the four common sites of breast cancer metastasis, through a C-terminal segment in the extracellular domain; blocking this lung-homing domain with antibodies or inhibiting metadherin with siRNA has been reported to inhibit breast cancer metastasis.

Recommended Dilution

WB: 1:500 - 1:2000

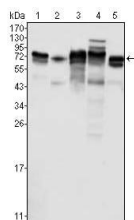
IHC-p: 1:200 - 1:1000

FCM: 1:200 - 1:400

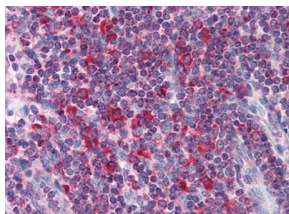
ELISA: 1:10000

Not yet tested in other applications.

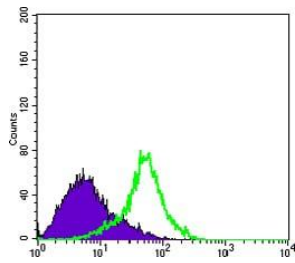
Images



Western blot analysis using Metadherin mouse mAb against K562 (1), SKBR-3 (2), T47D (3), Hela (4) and MCF-7 (5) cell lysate.



Immunohistochemical analysis of paraffin-embedded human Liver tissues using Metadherin mouse mAb



Flow cytometric analysis of HeLa cells using Metadherin mouse mAb (green) and negative control (purple).

Storage

Store at 4°C short term. Aliquot and store at -20°C long term.

501 Changsheng S Rd, Nanhu Dist, Jiaxing, Zhejiang, China

Tel: 86 21 31007137 | E-mail: save@bt-laboratory.com | www.bt-laboratory.com