

## RPA1 Monoclonal Antibody

### Description

<b>Product type</b>	Antibody
<b>Code</b>	BT-MCA4586
<b>Host</b>	Mouse
<b>Isotype</b>	Mouse IgG1
<b>Size</b>	100μL, 50μL
<b>Immunogen</b>	Purified recombinant fragment of human RPA1 expressed in E. Coli.
<b>Mol wt</b>	68.1kDa
<b>Species reactivity</b>	Human,Monkey
<b>Clonality</b>	Monoclonal
<b>Recommended application</b>	WB,IHC,ICC,FCM
<b>Concentration</b>	N/A
<b>Full name</b>	N/A
<b>Synonyms</b>	HSSB;RF-A;RP-A;REPA1;RPA70;MST075

This product is for research use only, not for use in human, therapeutic or diagnostic procedure.

### Background

"This gene Plays an essential role in several cellular processes in DNA metabolism including replication, recombination and DNA repair. Binds and subsequently stabilizes single-stranded DNA intermediates and thus prevents complementary DNA from reannealing"

### Recommended Dilution

WB: 1:500 - 1:2000

IHC-p: 1:200 - 1:1000

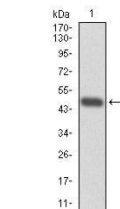
ICC: 1:200 - 1:1000

FCM: 1:200 - 1:400

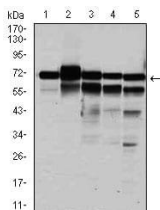
ELISA: 1:10000

Not yet tested in other applications.

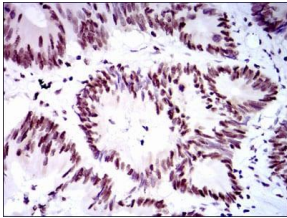
### Images



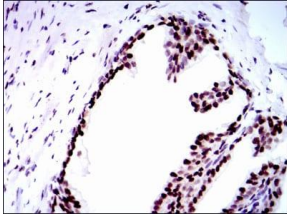
Western blot analysis using RPA1 mAb against human RPA1 (AA: 308-513) recombinant protein.  
(Expected MW is 48.3 kDa)



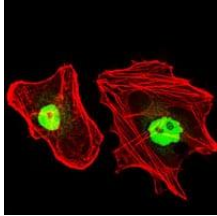
Western blot analysis using RPA1 mouse mAb against HeLa (1), MCF-7 (2), K562(3), A431(4), and COS-7 (6) cell lysate.



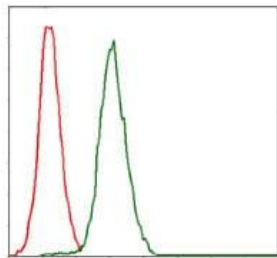
Immunohistochemical analysis of paraffin-embedded colon cancer tissues using RPA1 mouse mAb with DAB staining.



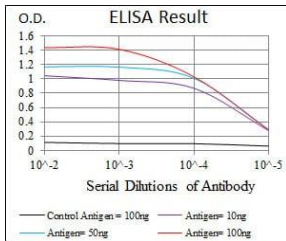
Immunohistochemical analysis of paraffin-embedded prostate tissues using RPA1 mouse mAb with DAB staining.



Immunofluorescence analysis of HeLa cells using RPA1 mouse mAb (green). Red: Actin filaments have been labeled with Alexa Fluor-555 phalloidin.



Flow cytometric analysis of Jurkat cells using RPA1 mouse mAb (green) and negative control (red).



Black line: Control Antigen (100 ng); Purple line: Antigen(10ng); Blue line: Antigen (50 ng); Red line: Antigen (100 ng);

## Storage

Store at 4°C short term. Aliquot and store at -20°C long term.

501 Changsheng S Rd, Nanhu Dist, Jiaxing, Zhejiang, China

Tel: 86 21 31007137 | E-mail: [save@bt-laboratory.com](mailto:save@bt-laboratory.com) | [www.bt-laboratory.com](http://www.bt-laboratory.com)