

CDK5 Monoclonal Antibody

Description

Product type	Antibody
Code	BT-MCA4603
Host	Mouse
Isotype	Mouse IgG1
Size	100µL, 50µL
Immunogen	Purified recombinant fragment of human CDK5 expressed in E. Coli.
Mol wt	35kDa
Species reactivity	Human,Rat,Monkey
Clonality	Monoclonal
Recommended application	WB,IHC,ICC,FCM
Concentration	N/A
Full name	N/A
Synonyms	PSSALRE

This product is for research use only, not for use in human, therapeutic or diagnostic procedure.

Background

Function: Probably involved in the control of the cell cycle. Interacts with D1 and D3-type G1 cyclins. Can phosphorylate histone H1, tau, MAP2 and NF-H and NF-M. Also interacts with p35 which activates the kinase.

Recommended Dilution

WB: 1:500 - 1:2000

IHC-p: 1:200 - 1:1000

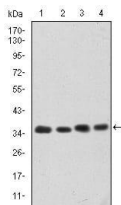
ICC: 1:200 - 1:1000

FCM: 1:200 - 1:400

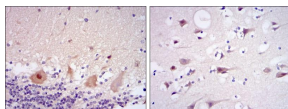
ELISA: 1:10000

Not yet tested in other applications.

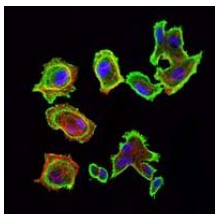
Images



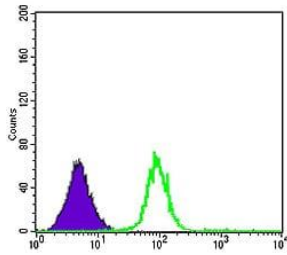
Western blot analysis using CDK5 mouse mAb against HeLa (1), K562 (2), PC-12 (3) and Cos7 (4) cell lysate.



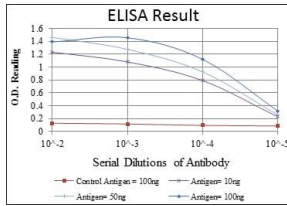
Immunohistochemical analysis of paraffin-embedded cerebellum tissues (left) and brain tissues (right) using CDK5 mouse mAb with DAB staining.



Immunofluorescence analysis of GC7901 cells using CDK5 mouse mAb (green). Blue: DRAQ5 fluorescent DNA dye. Red: Actin filaments have been labeled with Alexa Fluor-555 phalloidin.



Flow cytometric analysis of K562 cells using CDK5 mouse mAb (green) and negative control (purple).



Red: Control Antigen (100ng); Purple: Antigen (10ng); Green: Antigen (50ng); Blue: Antigen (100ng);

Storage

Store at 4°C short term. Aliquot and store at -20°C long term.

501 Changsheng S Rd, Nanhu Dist, Jiaxing, Zhejiang, China

Tel: 86 21 31007137 | E-mail: save@bt-laboratory.com | www.bt-laboratory.com