

## YES1 Monoclonal Antibody

### Description

<b>Product type</b>	Antibody
<b>Code</b>	BT-MCA4615
<b>Host</b>	Mouse
<b>Isotype</b>	Mouse IgG1
<b>Size</b>	100 $\mu$ L, 50 $\mu$ L
<b>Immunogen</b>	Purified recombinant fragment of YES (aa10-193) expressed in E. Coli.
<b>Mol wt</b>	N/A
<b>Species reactivity</b>	Human
<b>Clonality</b>	Monoclonal
<b>Recommended application</b>	Others
<b>Concentration</b>	N/A
<b>Full name</b>	N/A
<b>Synonyms</b>	Yes;c-yes;HsT441;P61-YES;YES1

This product is for research use only, not for use in human, therapeutic or diagnostic procedure.

### Background

YES1, v-yes-1 Yamaguchi sarcoma viral oncogene homolog 1. This gene is the cellular homolog of the Yamaguchi sarcoma virus oncogene. The encoded protein has tyrosine kinase activity and belongs to the src family of proteins. This gene lies in close proximity to thymidylate synthase gene on chromosome 18, and a corresponding pseudogene has been found on chromosome 22.

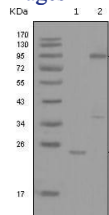
### Recommended Dilution

WB: 1:500 - 1:2000

ELISA: 1:10000

Not yet tested in other applications.

### Images



Western blot analysis using YES1 mouse mAb against truncated YES1-His recombinant protein (1) and full-length GFP-YES1(aa1-543) transfected COS7 cell lysate (2).

### Storage

Store at 4°C short term. Aliquot and store at -20°C long term.