

## LMNA Monoclonal Antibody

### Description

<b>Product type</b>	Antibody
<b>Code</b>	BT-MCA4638
<b>Host</b>	Mouse
<b>Isotype</b>	Mouse IgG1
<b>Size</b>	100µL, 50µL
<b>Immunogen</b>	Purified recombinant fragment of human LMNA expressed in E. Coli.
<b>Mol wt</b>	74kDa
<b>Species reactivity</b>	Human,Mouse,Rat
<b>Clonality</b>	Monoclonal
<b>Recommended application</b>	WB,IHC
<b>Concentration</b>	N/A
<b>Full name</b>	N/A
<b>Synonyms</b>	FPL;IDC;LFP;CDDC;EMD2;FPLD;HGPS;LDP1;LMN1;LMNC;PRO1;CDCD1;CMD1A;FPLD2;LMNL1;CMT2B1

**This product is for research use only, not for use in human, therapeutic or diagnostic procedure.**

### Background

The nuclear lamina consists of a two-dimensional matrix of proteins located next to the inner nuclear membrane. The lamin family of proteins make up the matrix and are highly conserved in evolution. During mitosis, the lamina matrix is reversibly disassembled as the lamin proteins are phosphorylated. Lamin proteins are thought to be involved in nuclear stability, chromatin structure and gene expression. Vertebrate lamins consist of two types, A and B. Through alternate splicing, this gene encodes three type A lamin isoforms. Mutations in this gene lead to several diseases: Emery-Dreifuss muscular dystrophy, familial partial lipodystrophy, limb girdle muscular dystrophy, dilated cardiomyopathy, Charcot-Marie-Tooth disease, and Hutchinson-Gilford progeria syndrome.

### Recommended Dilution

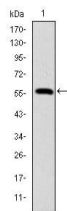
WB: 1:500 - 1:2000

IHC-p: 1:200 - 1:1000

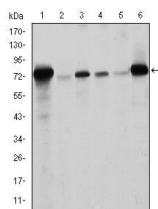
ELISA: 1:10000

Not yet tested in other applications.

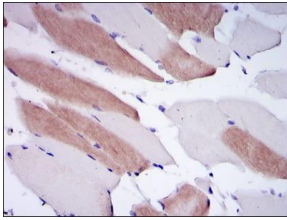
### Images



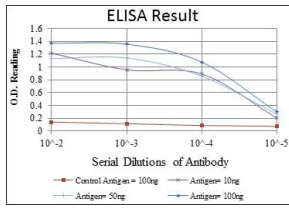
Western blot analysis using LMNA mAb against human LMNA (AA: 212-477) recombinant protein.  
(Expected MW is 56.3 kDa)



Western blot analysis using LMNA mouse mAb against Raw264.7 (1), PC-12 (2), THP-1 (3), A431 (4), MCF-7 (5) and Jurkat (6) cell lysate.



Immunohistochemical analysis of paraffin-embedded human striated muscle tissues using LMNA mouse mAb with DAB staining.



Red: Control Antigen (100ng); Purple: Antigen (10ng); Green: Antigen (50ng); Blue: Antigen (100ng);

## Storage

Store at 4°C short term. Aliquot and store at -20°C long term.

501 Changsheng S Rd, Nanhu Dist, Jiaxing, Zhejiang, China

Tel: 86 21 31007137 | E-mail: [save@bt-laboratory.com](mailto:save@bt-laboratory.com) | [www.bt-laboratory.com](http://www.bt-laboratory.com)