

NCK1 Monoclonal Antibody

Description

Product type	Antibody
Code	BT-MCA4646
Host	Mouse
Isotype	Mouse IgG1
Size	100µL, 50µL
Immunogen	Purified recombinant fragment of human NCK1 expressed in E. Coli.
Mol wt	47kDa
Species reactivity	Human,Monkey
Clonality	Monoclonal
Recommended application	WB,IHC,FCM
Concentration	N/A
Full name	N/A
Synonyms	NCK;nck-1;NCKalpha

This product is for research use only, not for use in human, therapeutic or diagnostic procedure.

Background

The protein encoded by this gene is one of the signaling and transforming proteins containing Src homology 2 and 3 (SH2 and SH3) domains. It is located in the cytoplasm and is an adaptor protein involved in transducing signals from receptor tyrosine kinases to downstream signal recipients such as RAS. Alternatively spliced transcript variants encoding different isoforms have been found.

Recommended Dilution

WB: 1:500 - 1:2000

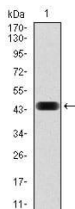
IHC-p: 1:200 - 1:1000

FCM: 1:200 - 1:400

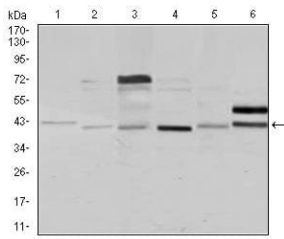
ELISA: 1:10000

Not yet tested in other applications.

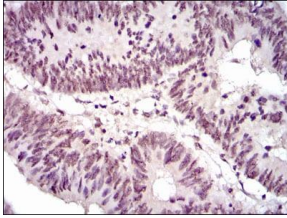
Images



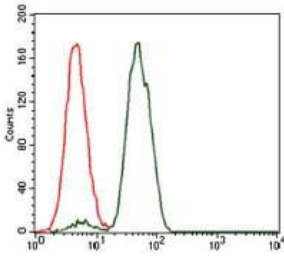
Western blot analysis using NCK1 mAb against human NCK1 (AA: 203-371) recombinant protein.
(Expected MW is 44.9 kDa)



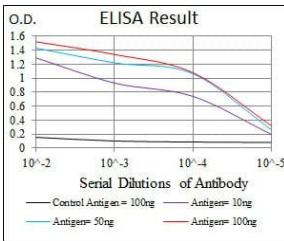
Western blot analysis using NCK1 mouse mAb against Jurkat (1), HeLa (2), HEK293 (3), A431 (4), K562 (5), and COS7 (6) cell lysate.



Immunohistochemical analysis of paraffin-embedded rectum cancer tissues using NCK1 mouse mAb with DAB staining.



Flow cytometric analysis of Jurkat cells using NCK1 mouse mAb (green) and negative control (red).



Black line: Control Antigen (100 ng); Purple line: Antigen(10ng); Blue line: Antigen (50 ng); Red line: Antigen (100 ng);

Storage

Store at 4°C short term. Aliquot and store at -20°C long term.

501 Changsheng S Rd, Nanhu Dist, Jiaxing, Zhejiang, China

Tel: 86 21 31007137 | E-mail: save@bt-laboratory.com | www.bt-laboratory.com