

AKT2 Monoclonal Antibody

Description

Product type	Antibody
Code	BT-MCA4701
Host	Mouse
Isotype	Mouse IgG2b
Size	100 μ L, 50 μ L
Immunogen	Purified recombinant fragment of human AKT2 expressed in E. Coli.
Mol wt	60kDa
Species reactivity	Human,Rat,Monkey
Clonality	Monoclonal
Recommended application	WB,IHC,ICC
Concentration	N/A
Full name	N/A
Synonyms	PKBB;PRKBB;PKBBETA;RAC-BETA

This product is for research use only, not for use in human, therapeutic or diagnostic procedure.

Background

Akt2 (also designated protein kinase B beta or v-akt murine thymoma viral oncogene homolog 2), with 481-amino acid protein (about 53kDa), belongs to the AKT serine/threonine protein kinase family, which also includes Akt1 and Akt3. They are involved in a wide variety of biological processes including cell proliferation, differentiation, apoptosis, tumorigenesis, as well as glycogen synthesis and glucose uptake. Among the members of AKT family, Akt2 is associated with the development of human cancers. Akt2 inhibits cisplatin-induced JNK/p38 and Bax activation through phosphorylation of ASK1 and thus, plays an important role in chemoresistance. Further, Akt2 plays a specific role in muscle differentiation.

Recommended Dilution

WB: 1:500 - 1:2000

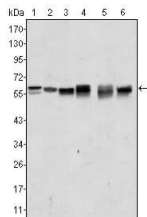
IHC-p: 1:200 - 1:1000

ICC: 1:200 - 1:1000

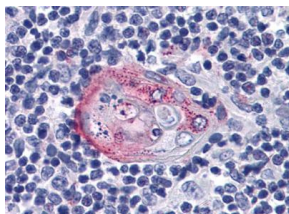
ELISA: 1:10000

Not yet tested in other applications.

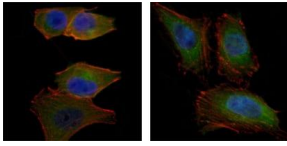
Images



Western blot analysis using AKT2 mouse mAb against A431 (1), Jurkat (2), HEK293 (3), A549 (4), MCF-7 (5) and PC-12 (6) cell lysate.



Immunohistochemical analysis of paraffin-embedded human Thymus tissues using anti-AKT2 mAb



Immunofluorescence analysis of PANC-1 (left) and HeLa (right) cells using AKT2 mouse mAb (green). Blue: DRAQ5 fluorescent DNA dye. Red: Actin filaments have been labeled with Alexa Fluor-555 phalloidin.

Storage

Store at 4°C short term. Aliquot and store at -20°C long term.

501 Changsheng S Rd, Nanhu Dist, Jiaxing, Zhejiang, China

Tel: 86 21 31007137 | E-mail: save@bt-laboratory.com | www.bt-laboratory.com