

## TUBB1 Monoclonal Antibody

### Description

<b>Product type</b>	Antibody
<b>Code</b>	BT-MCA4702
<b>Host</b>	Mouse
<b>Isotype</b>	Mouse IgG1
<b>Size</b>	100µL, 50µL
<b>Immunogen</b>	Purified recombinant fragment of human TUBB1 (AA: 1-444) expressed in E. Coli.
<b>Mol wt</b>	50.3kDa
<b>Species reactivity</b>	Human,Mouse,Monkey
<b>Clonality</b>	Monoclonal
<b>Recommended application</b>	WB,IHC,ICC,FCM
<b>Concentration</b>	N/A
<b>Full name</b>	N/A
<b>Synonyms</b>	M40;TUBB1;TUBB5;CDCBM6;CSCSC1;OK/SW-cl.56

This product is for research use only, not for use in human, therapeutic or diagnostic procedure.

### Background

This gene encodes a member of the beta tubulin protein family. Beta tubulins are one of two core protein families (alpha and beta tubulins) that heterodimerize and assemble to form microtubules. This protein is specifically expressed in platelets and megakaryocytes and may be involved in proplatelet production and platelet release. A mutations in this gene is associated with autosomal dominant macrothrombocytopenia. Two pseudogenes of this gene are found on chromosome Y.

### Recommended Dilution

WB: 1:500 - 1:2000

IHC-p: 1:200 - 1:1000

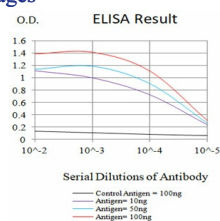
ICC: 1:200 - 1:1000

FCM: 1:200 - 1:400

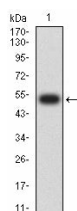
ELISA: 1:10000

Not yet tested in other applications.

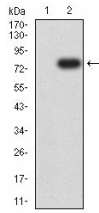
### Images



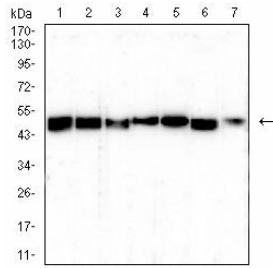
Black line: Control Antigen (100 ng);Purple line: Antigen (10ng); Blue line: Antigen (50 ng); Red line:Antigen (100 ng)



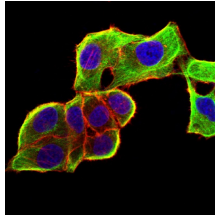
Western blot analysis using TUBB1 mAb against human TUBB1 (AA: 1-444) recombinant protein. (Expected MW is 52.6 kDa)



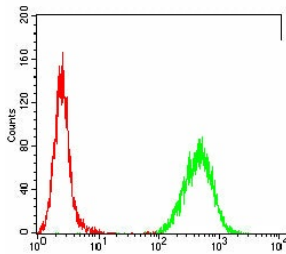
Western blot analysis using TUBB1 mAb against HEK293-6e (1) and human TUBB1 (AA: 1-444)-hlgGfc transfected HEK293-6e (2) cell lysate.



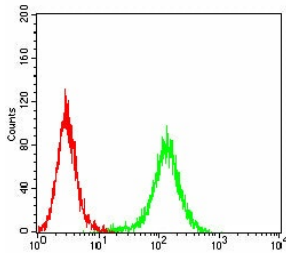
Western blot analysis using TUBB1 mouse mAb against K562 (1), HepG2 (2), A431 (3), Jurkat (4), HeLa (5), NIH/3T3 (6), and COS-7 (7) cell lysate.



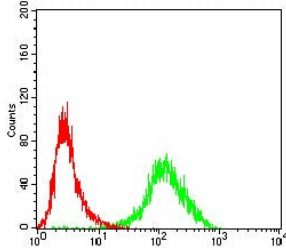
Immunofluorescence analysis of HeLa cells using TUBB1 mouse mAb (green). Blue: DRAQ5 fluorescent DNA dye. Red: Actin filaments have been labeled with Alexa Fluor-555 phalloidin. Secondary antibody from Fisher (Cat#: 35503)



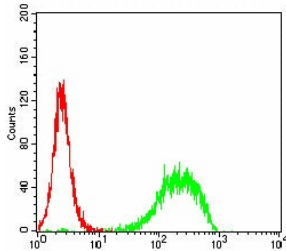
Flow cytometric analysis of HeLa cells using TUBB1 mouse mAb (green) and negative control (red).



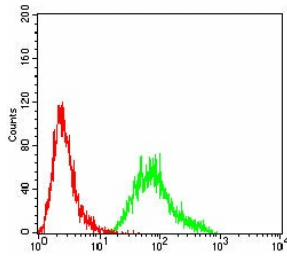
Flow cytometric analysis of HepG2 cells using TUBB1 mouse mAb (green) and negative control (red).



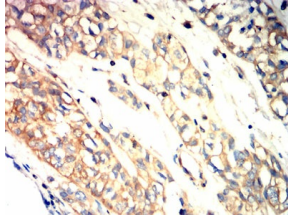
Flow cytometric analysis of HL-60 cells using TUBB1 mouse mAb (green) and negative control (red).



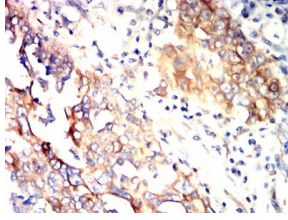
Flow cytometric analysis of Jurkat cells using TUBB1 mouse mAb (green) and negative control (red).



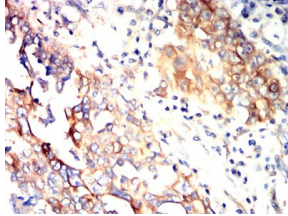
Flow cytometric analysis of THP-1 cells using TUBB1 mouse mAb (green) and negative control (red).



Immunohistochemical analysis of paraffin-embedded bladder cancer tissues using TUBB1 mouse mAb with DAB staining.



Immunohistochemical analysis of paraffin-embedded lung cancer tissues using TUBB1 mouse mAb with DAB staining.



Immunohistochemical analysis of paraffin-embedded ovarian cancer tissues using TUBB1 mouse mAb with DAB staining.

### Storage

Store at 4°C short term. Aliquot and store at -20°C long term.

501 Changsheng S Rd, Nanhu Dist, Jiaxing, Zhejiang, China

Tel: 86 21 31007137 | E-mail: [save@bt-laboratory.com](mailto:save@bt-laboratory.com) | [www.bt-laboratory.com](http://www.bt-laboratory.com)