

## KLHL1 Monoclonal Antibody

### Description

Product type	Antibody
Code	BT-MCA4706
Host	Mouse
Isotype	Mouse IgG1
Size	100µL, 50µL
Immunogen	Purified recombinant fragment of human KLHL1 expressed in E. Coli.
Mol wt	82kDa
Species reactivity	Human
Clonality	Monoclonal
Recommended application	ICC
Concentration	N/A
Full name	N/A
Synonyms	MRP2;FLJ30047;KIAA1490;KLHL1

This product is for research use only, not for use in human, therapeutic or diagnostic procedure.

### Background

The mammalian Kelch like 1 (KLHL1) was initially discovered as a homolog to the Drosophila Kelch gene that is highly expressed in several brain tissues. The predicted protein domain structure of KLHL1 is characteristic of a number of proteins that bind actin, form dimers, and often act as actin organizing proteins. Based on the presence of anti sense RNA that spans the transcription and translation start sites as well as the first splice site of KLHL1 in brain tissue of individuals suffering from the neurodegenerative disorder spinocerebellar ataxia type 8 (SCA8), it has been suggested that KLHL1 is involved in this disease and that regulation of KLHL1 protein may be affected by antisense RNA expression. Tissue specificity: Highly expressed in brain.

### Recommended Dilution

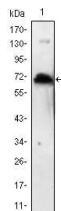
WB: 1:500 - 1:2000

ICC: 1:200 - 1:1000

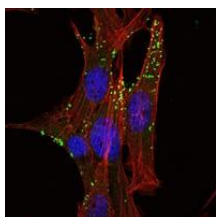
ELISA: 1:10000

Not yet tested in other applications.

### Images



Western blot analysis using KLHL1 mAb against human KLHL1 (AA: 202-506) recombinant protein.  
(Expected MW is 60.2 kDa)



Immunofluorescence analysis of NIH/3T3 cells using KLHL1 mouse mAb (green). Red: Actin filaments have been labeled with Alexa Fluor-555 phalloidin.

## Storage

Store at 4°C short term. Aliquot and store at -20°C long term.

501 Changsheng S Rd, Nanhu Dist, Jiaxing, Zhejiang, China

Tel: 86 21 31007137 | E-mail: [save@bt-laboratory.com](mailto:save@bt-laboratory.com) | [www.bt-laboratory.com](http://www.bt-laboratory.com)