

## MELK Monoclonal Antibody

### Description

<b>Product type</b>	Antibody
<b>Code</b>	BT-MCA4709
<b>Host</b>	Mouse
<b>Isotype</b>	Mouse IgG2a
<b>Size</b>	100µL, 50µL
<b>Immunogen</b>	Synthesized peptide of human MELK(AA: 637-651:C-VYKRLVEDILSSCKV).
<b>Mol wt</b>	74.6kDa
<b>Species reactivity</b>	Human
<b>Clonality</b>	Monoclonal
<b>Recommended application</b>	IHC,ICC,FCM
<b>Concentration</b>	N/A
<b>Full name</b>	N/A
<b>Synonyms</b>	HPK38

This product is for research use only, not for use in human, therapeutic or diagnostic procedure.

### Background

Maternal embryonic leucine-zipper kinase (MELK) is a key regulator of survival of stemlike GBM cells in vitro. MELK expression is increased in breast cancer tissue and this increase is also associated with poor patient survival, as predicted for a candidate oncogene.

### Recommended Dilution

IHC-p: 1:200 - 1:1000

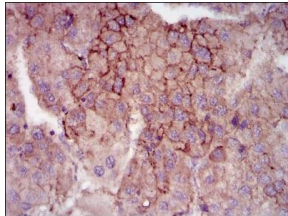
ICC: 1:200 - 1:1000

FCM: 1:200 - 1:400

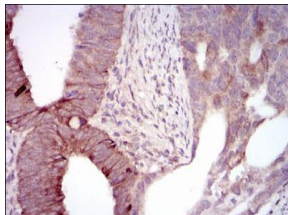
ELISA: 1:10000

Not yet tested in other applications.

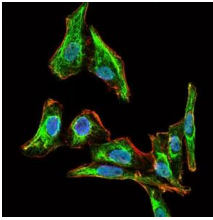
### Images



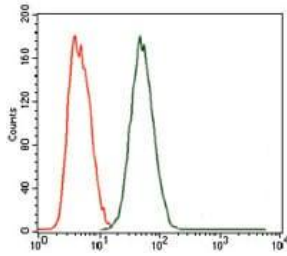
Immunohistochemical analysis of paraffin-embedded liver cancer tissues using MELK mouse mAb with DAB staining.



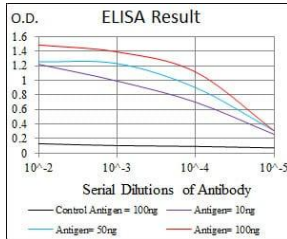
Immunohistochemical analysis of paraffin-embedded rectum cancer tissues using MELK mouse mAb with DAB staining.



Immunofluorescence analysis of HepG2 cells using MELK mouse mAb (green). Blue: DRAQ5 fluorescent DNA dye. Red: Actin filaments have been labeled with Alexa Fluor-555 phalloidin.



Flow cytometric analysis of MCF-7 cells using MELK mouse mAb (green) and negative control (red).



Black line: Control Antigen (100 ng); Purple line: Antigen(10ng); Blue line: Antigen (50 ng); Red line: Antigen (100 ng);

### Storage

Store at 4°C short term. Aliquot and store at -20°C long term.

501 Changsheng S Rd, Nanhu Dist, Jiaxing, Zhejiang, China

Tel: 86 21 31007137 | E-mail: save@bt-laboratory.com | www.bt-laboratory.com