

BRCA1 Monoclonal Antibody

Description

| | |
|--------------------------------|--|
| Product type | Antibody |
| Code | BT-MCA4727 |
| Host | Mouse |
| Isotype | Mouse IgG1 |
| Size | 100µL, 50µL |
| Immunogen | Purified recombinant fragment of human BRCA1 (AA: 229-335) expressed in E. Coli. |
| Mol wt | 207.7kDa |
| Species reactivity | Human |
| Clonality | Monoclonal |
| Recommended application | IHC |
| Concentration | N/A |
| Full name | N/A |
| Synonyms | IRIS;PSCP;BRCAI;BRCC1;PNCA4;RNF53;BROVCA1;PPP1R53 |

This product is for research use only, not for use in human, therapeutic or diagnostic procedure.

Background

N/A

Recommended Dilution

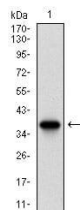
WB: 1:500 - 1:2000

IHC-p: 1:200 - 1:1000

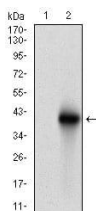
ELISA: 1:10000

Not yet tested in other applications.

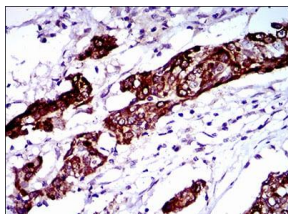
Images



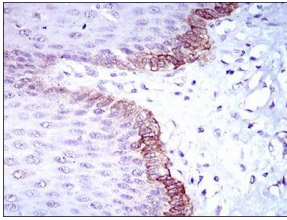
Western blot analysis using BRCA1 mAb against human BRCA1 recombinant protein. (Expected MW is 37.5 kDa)



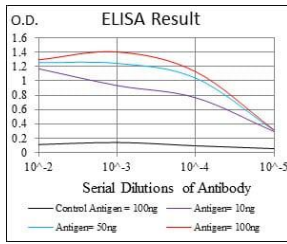
Western blot analysis using BRCA1 mAb against HEK293 (1) and BRCA1 (AA: 229-335)-hIgGfc transfected HEK293 (2) cell lysate.



Immunohistochemical analysis of paraffin-embedded esophagus cancer tissues using BRCA1 mouse mAb with DAB staining.



Immunohistochemical analysis of paraffin-embedded esophagus tissues using BRCA1 mouse mAb with DAB staining.



Black line: Control Antigen (100 ng); Purple line: Antigen(10ng); Blue line: Antigen (50 ng); Red line: Antigen (100 ng);

Storage

Store at 4°C short term. Aliquot and store at -20°C long term.

501 Changsheng S Rd, Nanhu Dist, Jiaxing, Zhejiang, China

Tel: 86 21 31007137 | E-mail: save@bt-laboratory.com | www.bt-laboratory.com