

ESR1 Monoclonal Antibody

Description

Product type	Antibody
Code	BT-MCA4734
Host	Mouse
Isotype	Mouse IgG1
Size	100µL, 50µL
Immunogen	Synthetic peptide corresponding to aa(SLQKYYITGEAEGFPATVc) of human ESR1, conjugated to KLH.
Mol wt	N/A
Species reactivity	Human
Clonality	Monoclonal
Recommended application	WB
Concentration	N/A
Full name	N/A
Synonyms	ER;ESR;Era;ESRA;NR3A1

This product is for research use only, not for use in human, therapeutic or diagnostic procedure.

Background

ESR1: estrogen receptor 1. This gene encodes an estrogen receptor, a ligand-activated transcription factor composed of several domains important for hormone binding, DNA binding, and activation of transcription. The protein localizes to the nucleus where it may form a homodimer or a heterodimer with estrogen receptor 2. Estrogen and its receptors are essential for sexual development and reproductive function, but also play a role in other tissues such as bone. Estrogen receptors are also involved in pathological processes including breast cancer, endometrial cancer, and osteoporosis. Alternative splicing results in several transcript variants, which differ in their 5' UTRs and use different promoters.

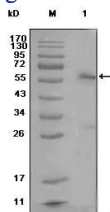
Recommended Dilution

WB: 1:500 - 1:2000

ELISA: 1:10000

Not yet tested in other applications.

Images



Western blot analysis using ESR1 mouse mAb against MCF-7 cell lysate (1)

Storage

Store at 4°C short term. Aliquot and store at -20°C long term.