

S100A10/P11 Monoclonal Antibody

Description

Product type	Antibody
Code	BT-MCA4735
Host	Mouse
Isotype	Mouse IgG1
Size	100µL, 50µL
Immunogen	Purified recombinant fragment of human P11 expressed in E. Coli.
Mol wt	11kDa
Species reactivity	Human
Clonality	Monoclonal
Recommended application	WB,IHC,ICC
Concentration	N/A
Full name	N/A
Synonyms	S100A10;P11;PP11;PRSS26

This product is for research use only, not for use in human, therapeutic or diagnostic procedure.

Background

S100 calcium binding protein A10 (S100A10/P11), it is a member of the S100 family of proteins containing 2 EF-hand calcium-binding motifs. S100 proteins are localized in the cytoplasm and/or nucleus of a wide range of cells, and involved in the regulation of a number of cellular processes such as cell cycle progression and differentiation. S100 genes include at least 13 members which are located as a cluster on chromosome 1q21. This protein may function in exocytosis and endocytosis.

Recommended Dilution

WB: 1:500 - 1:2000

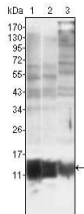
IHC-p: 1:200 - 1:1000

ICC: 1:200 - 1:1000

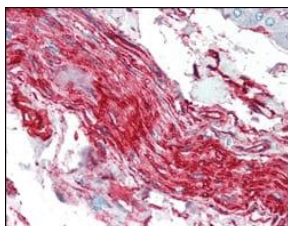
ELISA: 1:10000

Not yet tested in other applications.

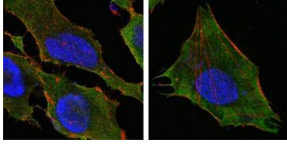
Images



Western blot analysis using S100A10/P11 mouse mAb against MCF-7 (1), HepG2 (2) and Hela (3).



Immunohistochemical analysis of paraffin-embedded human nerve and ganglion cells using S100A10/P11 mouse mAb.



Confocal Immunofluorescence analysis of HeLa (left) and L-02 (right) cells using S100A10/P11 mouse mAb(green). Red: Actin filaments have been labeled with DY-554 phalloidin. Blue: DRAQ5 fluorescent DNA dye.

Storage

Store at 4°C short term. Aliquot and store at -20°C long term.

501 Changsheng S Rd, Nanhu Dist, Jiaxing, Zhejiang, China

Tel: 86 21 31007137 | E-mail: save@bt-laboratory.com | www.bt-laboratory.com