

## KLHL21 Monoclonal Antibody

### Description

Product type	Antibody
Code	BT-MCA4739
Host	Mouse
Isotype	Mouse IgG1
Size	100 $\mu$ L, 50 $\mu$ L
Immunogen	Purified recombinant fragment of human KLHL21 expressed in E. Coli.
Mol wt	66kDa
Species reactivity	Human
Clonality	Monoclonal
Recommended application	IHC
Concentration	N/A
Full name	N/A
Synonyms	KIAA0469;MGC99635;KLHL21

This product is for research use only, not for use in human, therapeutic or diagnostic procedure.

### Background

Probable substrate-specific adapter of an E3 ubiquitin-protein ligase complex which mediates the ubiquitination and subsequent proteasomal degradation of target proteins.

### Recommended Dilution

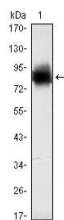
WB: 1:500 - 1:2000

IHC-p: 1:200 - 1:1000

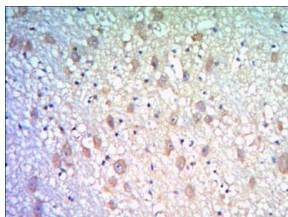
ELISA: 1:10000

Not yet tested in other applications.

### Images



Western blot analysis using KLHL21 mAb against human KLHL21 (AA: 250-597) recombinant protein. (Expected MW is 64.4 kDa)



Immunohistochemical analysis of paraffin-embedded human brain tissues using KLHL21 mouse mAb with DAB staining.

### Storage

Store at 4°C short term. Aliquot and store at -20°C long term.

