

KLHL22 Monoclonal Antibody

Description

Product type	Antibody
Code	BT-MCA4753
Host	Mouse
Isotype	Mouse IgG1
Size	100µL, 50µL
Immunogen	Purified recombinant fragment of human KLHL22 expressed in E. Coli.
Mol wt	72kDa
Species reactivity	Human
Clonality	Monoclonal
Recommended application	WB, ICC
Concentration	N/A
Full name	N/A
Synonyms	KELCHL;KLHL22

This product is for research use only, not for use in human, therapeutic or diagnostic procedure.

Background

KLHL22 (kelch-like protein 22) is a 634 amino acid protein that is related to the Drosophilakelch protein, which is required to maintain Actin organization in ovarian ring canals. Mutations affecting Kelch function result in the failure of Kelch to associate with the ring canals and subsequent female sterility. Human KLHL22 protein contains six kelch repeats and one BTB (POZ) domain. The BTB (Broad-Complex, Tramtrack and Bric a brac) domain, also known as the POZ (Poxvirus and Zinc finger) domain, is an N-terminal homodimerization domain that contains multiple copies of kelch repeats and/or C2H2-type zinc fingers. Proteins that contain BTB domains are thought to be involved in transcriptional regulation via control of chromatin structure and function. There are two isoforms of KLHL22 that are produced as a result of alternative splicing events.

Recommended Dilution

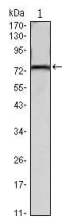
WB: 1:500 - 1:2000

ICC: 1:200 - 1:1000

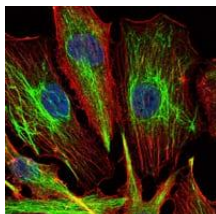
ELISA: 1:10000

Not yet tested in other applications.

Images



Western blot analysis using KLHL22 mouse mAb against mouse brain tissues lysate.



Immunofluorescence analysis of U251 cells using KLHL22 mouse mAb (green). Blue: DRAQ5 fluorescent DNA dye. Red: Actin filaments have been labeled with Alexa Fluor-555 phalloidin.

Storage

Store at 4°C short term. Aliquot and store at -20°C long term.

501 Changsheng S Rd, Nanhu Dist, Jiaxing, Zhejiang, China

Tel: 86 21 31007137 | E-mail: save@bt-laboratory.com | www.bt-laboratory.com