

CD335 Monoclonal Antibody

Description

Product type	Antibody
Code	BT-MCA4784
Host	Mouse
Isotype	Mouse IgG1
Size	100µL, 50µL
Immunogen	Purified recombinant fragment of human CD335 (AA: extra 22-258) expressed in E. Coli.
Mol wt	34.5kDa
Species reactivity	Human
Clonality	Monoclonal
Recommended application	FCM
Concentration	N/A
Full name	N/A
Synonyms	NCR1;LY94;NKP46;NK-p46

This product is for research use only, not for use in human, therapeutic or diagnostic procedure.

Background

NCR1 (Natural Cytotoxicity Triggering Receptor 1) is a Protein Coding gene. Diseases associated with NCR1 include Viral Infectious Disease. Among its related pathways are Immunoregulatory interactions between a Lymphoid and a non-Lymphoid cell and Natural Killer Cell Receptors: Human Target Cell – NK Cell Ligand-Receptor Interactions. GO annotations related to this gene include signal transducer activity, downstream of receptor. An important paralog of this gene is LILRB3.

Recommended Dilution

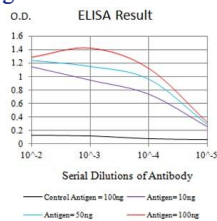
WB: 1:500 - 1:2000

FCM: 1:200 - 1:400

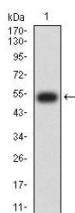
ELISA: 1:10000

Not yet tested in other applications.

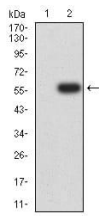
Images



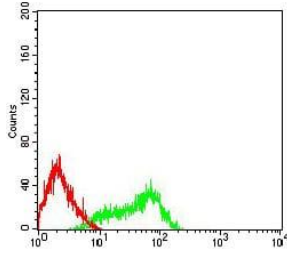
Black line: Control Antigen (100 ng);Purple line: Antigen (10ng); Blue line: Antigen (50 ng); Red line:Antigen (100 ng)



Western blot analysis using CD335 mAb against human CD335 (AA: extra 22-258) recombinant protein. (Expected MW is 52.8 kDa)



Western blot analysis using CD335 mAb against HEK293 (1) and CD335 (AA: extra 22-258)-hlgGFc transfected HEK293 (2) cell lysate.



Flow cytometric analysis of HL-60 cells using CD335 mouse mAb (green) and negative control (red).

Storage

Store at 4°C short term. Aliquot and store at -20°C long term.

501 Changsheng S Rd, Nanhu Dist, Jiaxing, Zhejiang, China

Tel: 86 21 31007137 | E-mail: save@bt-laboratory.com | www.bt-laboratory.com