

INHA Monoclonal Antibody

Description

Product type	Antibody
Code	BT-MCA4785
Host	Mouse
Isotype	Mouse IgG1
Size	100µL, 50µL
Immunogen	Purified recombinant fragment of human INHA expressed in E. Coli.
Mol wt	40kDa
Species reactivity	Human,Mouse
Clonality	Monoclonal
Recommended application	WB,ICC
Concentration	N/A
Full name	N/A
Synonyms	INHA

This product is for research use only, not for use in human, therapeutic or diagnostic procedure.

Background

Inhibins are peptide hormones produced by the granulosa cells in female follicles and by Sertoli cells in the male seminiferous tubules. They are selectively expressed by cells of sex cord stromal derivation, and inhibit the secretion of follitropin by the pituitary gland. Inhibins are also involved in regulating diverse functions such as hypothalamic and pituitary hormone secretion, gonadal hormone secretion, germ cell development and maturation, erythroid differentiation, insulin secretion, nerve cell survival, embryonic axial development or bone growth, depending on their subunit composition. Inhibins appear to oppose the functions of activins, as inhibins and activins inhibit and activate, respectively, the secretion of follitropin by the pituitary gland. Inhibin has 2 subunits (alpha and beta) that are coded by separate genes. The alpha subunit determines whether inhibin or activin will be produced. The alpha subunit remains constant, such that the various types of inhibin are defined by the beta subunit (a,b,c,d). Inhibin A is a dimer of alpha and beta A. Inhibin B is a dimer of alpha and beta B. Proteolytic processing yields a number of inhibin alpha bioactive forms: the 20/23 kDa forms consist solely of the mature alpha chain, the 26/29 kDa forms consist of the most N terminal propeptide linked through a disulfide bond to the mature alpha chain, and the 50/53 kDa forms encompass the entire proprotein. Each type can be furthermore either mono or diglycosylated, causing the mass difference.

Recommended Dilution

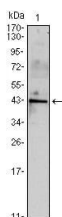
WB: 1:500 - 1:2000

ICC: 1:200 - 1:1000

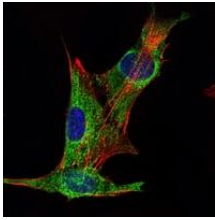
ELISA: 1:10000

Not yet tested in other applications.

Images



Western blot analysis using INHA mouse mAb against mouse spermary (1) tissues lysate.



Immunofluorescence analysis of PANC-1 cells using INHA mouse mAb (green). Blue: DRAQ5 fluorescent DNA dye. Red: Actin filaments have been labeled with Alexa Fluor-555 phalloidin.

Storage

Store at 4°C short term. Aliquot and store at -20°C long term.

501 Changsheng S Rd, Nanhu Dist, Jiaxing, Zhejiang, China

Tel: 86 21 31007137 | E-mail: save@bt-laboratory.com | www.bt-laboratory.com