

## LMNB1 Monoclonal Antibody

### Description

<b>Product type</b>	Antibody
<b>Code</b>	BT-MCA4842
<b>Host</b>	Mouse
<b>Isotype</b>	Mouse IgG1
<b>Size</b>	100µL, 50µL
<b>Immunogen</b>	Purified recombinant fragment of human LMNB1 (AA: 413-583) expressed in HEK293-6e cells supernatant.
<b>Mol wt</b>	66.4kDa
<b>Species reactivity</b>	Human,Mouse,Rat
<b>Clonality</b>	Monoclonal
<b>Recommended application</b>	WB,IHC,ICC,FCM
<b>Concentration</b>	N/A
<b>Full name</b>	N/A
<b>Synonyms</b>	LMN;ADLD;LMN2;LMNB;MCPH26

This product is for research use only, not for use in human, therapeutic or diagnostic procedure.

### Background

This gene encodes one of the two B-type lamin proteins and is a component of the nuclear lamina. A duplication of this gene is associated with autosomal dominant adult-onset leukodystrophy (ADLD). Alternative splicing results in multiple transcript variants.

### Recommended Dilution

WB: 1:500 - 1:2000

IHC-p: 1:200 - 1:1000

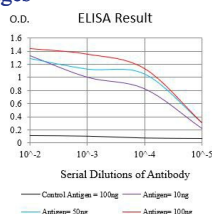
ICC: 1:200 - 1:1000

FCM: 1:200 - 1:400

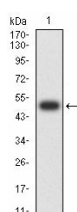
ELISA: 1:10000

Not yet tested in other applications.

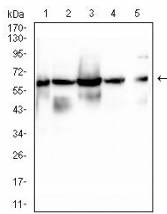
### Images



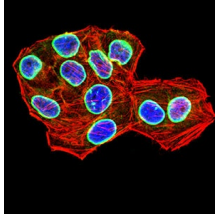
Black line: Control Antigen (100 ng);Purple line: Antigen (10ng); Blue line: Antigen (50 ng); Red line:Antigen (100 ng)



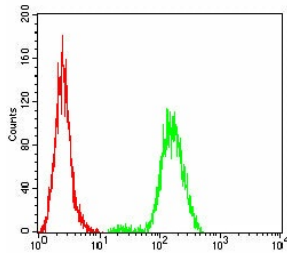
Western blot analysis using LMNB1 mAb against human LMNB1 (AA: 413-583) recombinant protein. (Expected MW is 49.4 kDa)



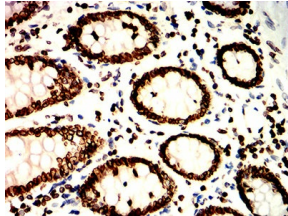
Western blot analysis using LMNB1 mouse mAb against HeLa (1), HEK2933 (2), K562 (3), SH-SY5Y (4), and PC-3 (5) cell lysate.



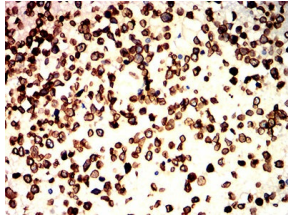
Immunofluorescence analysis of HeLa cells using LMNB1 mouse mAb (green). Blue: DRAQ5 fluorescent DNA dye. Red: Actin filaments have been labeled with Alexa Fluor-555 phalloidin. Secondary antibody from Fisher (Cat#: 35503)



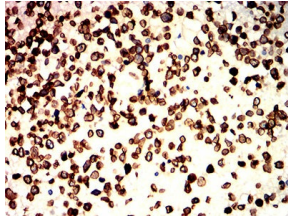
Flow cytometric analysis of HeLa cells using LMNB1 mouse mAb (green) and negative control (red).



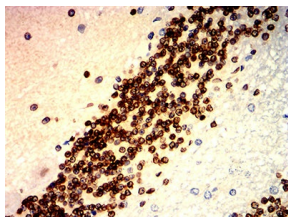
Immunohistochemical analysis of paraffin-embedded colon tissues using LMNB1 mouse mAb with DAB staining.



Immunohistochemical analysis of paraffin-embedded ovarian cancer tissues using LMNB1 mouse mAb with DAB staining.



Immunohistochemical analysis of paraffin-embedded brain tumors tissues using LMNB1 mouse mAb with DAB staining.



Immunohistochemical analysis of paraffin-embedded cerebellum tissues using LMNB1 mouse mAb with DAB staining.

### Storage

Store at 4°C short term. Aliquot and store at -20°C long term.

501 Changsheng S Rd, Nanhu Dist, Jiaxing, Zhejiang, China

Tel: 86 21 31007137 | E-mail: [save@bt-laboratory.com](mailto:save@bt-laboratory.com) | [www.bt-laboratory.com](http://www.bt-laboratory.com)