

HSP60 Monoclonal Antibody

Description

Product type	Antibody
Code	BT-MCA4846
Host	Mouse
Isotype	Mouse IgG1
Size	100µL, 50µL
Immunogen	Purified recombinant fragment of human HSP60 expressed in E. Coli.
Mol wt	61kDa
Species reactivity	Human,Rat,Mouse,Monkey
Clonality	Monoclonal
Recommended application	WB,IHC,ICC,FCM
Concentration	N/A
Full name	N/A
Synonyms	HLD4;CPN60;GROEL;HSP60;HSP65;SPG13;HSP-60;HuCHA60;HSPD1

This product is for research use only, not for use in human, therapeutic or diagnostic procedure.

Background

This gene encodes a member of the chaperonin family. The encoded mitochondrial protein may function as a signaling molecule in the innate immune system. This protein is essential for the folding and assembly of newly imported proteins in the mitochondria. This gene is adjacent to a related family member and the region between the 2 genes functions as a bidirectional promoter. Several pseudogenes have been associated with this gene. Two transcript variants encoding the same protein have been identified for this gene. Mutations associated with this gene cause autosomal recessive spastic paraplegia 13. (provided by RefSeq)

Recommended Dilution

WB: 1:500 - 1:2000

IHC-p: 1:200 - 1:1000

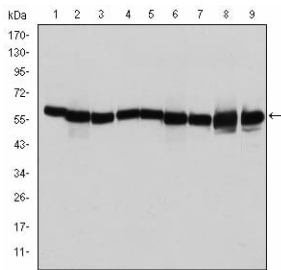
ICC: 1:200 - 1:1000

FCM: 1:200 - 1:400

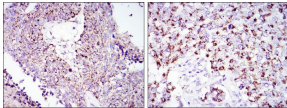
ELISA: 1:10000

Not yet tested in other applications.

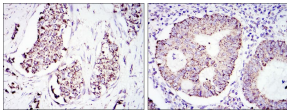
Images



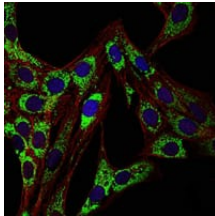
Western blot analysis using HSP60 mouse mAb against T47D (1), HeLa (2), HepG2 (3), A549 (4), Jurkat (5), HEK293 (6), NIH/3T3 (7), PC-12 (8) and Cos7 (9) cell lysate.



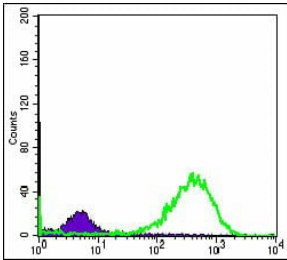
Immunohistochemical analysis of paraffin-embedded lung cancer tissues (left) and kidney cancer tissues (right) using HSP60 mouse mAb with DAB staining.



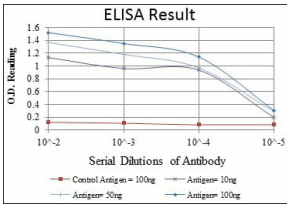
Immunohistochemical analysis of paraffin-embedded breast cancer tissues (left) and colon cancer tissues (right) using HSP60 mouse mAb with DAB staining.



Immunofluorescence analysis of 3T3-L1 cells using HSP60 mouse mAb (green). Blue: DRAQ5 fluorescent DNA dye. Red: Actin filaments have been labeled with Alexa Fluor-555 phalloidin.



Flow cytometric analysis of HeLa cells using HSP60 mouse mAb (green) and negative control (purple).



Red: Control Antigen (100ng); Purple: Antigen (10ng); Green: Antigen (50ng); Blue: Antigen (100ng);

Storage

Store at 4°C short term. Aliquot and store at -20°C long term.

501 Changsheng S Rd, Nanhu Dist, Jiaxing, Zhejiang, China

Tel: 86 21 31007137 | E-mail: save@bt-laboratory.com | www.bt-laboratory.com