

## TUBB3 Monoclonal Antibody

### Description

<b>Product type</b>	Antibody
<b>Code</b>	BT-MCA4848
<b>Host</b>	Mouse
<b>Isotype</b>	Mouse IgG1
<b>Size</b>	100µL, 50µL
<b>Immunogen</b>	Purified recombinant fragment of human TUBB3 expressed in E. Coli.
<b>Mol wt</b>	50-55kDa
<b>Species reactivity</b>	Human,Mouse,Rat
<b>Clonality</b>	Monoclonal
<b>Recommended application</b>	WB,ICC,FCM
<b>Concentration</b>	N/A
<b>Full name</b>	N/A
<b>Synonyms</b>	tubulin;beta 3;MC1R;TUBB4

This product is for research use only, not for use in human, therapeutic or diagnostic procedure.

### Background

Tubulin, beta 3, also known as TUBB3. Tubulin is the major constituent of microtubules. It binds two moles of GTP, one at an exchangeable site on the beta chain and one at a non exchangeable site on the alpha-chain. Tubulin is a highly conserved protein with a molecular weight of ~50 kD. Microtubules play key roles in chromosome segregation in mitosis, intracellular transport, ciliary and flagellar bending, and structural support of the cytoskeleton. The two main tubulin isoforms,  $\alpha$ - and

### Recommended Dilution

WB: 1:500 - 1:2000

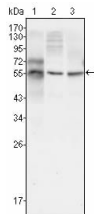
ICC: 1:200 - 1:1000

FCM: 1:200 - 1:400

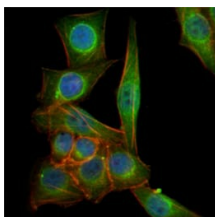
ELISA: 1:10000

Not yet tested in other applications.

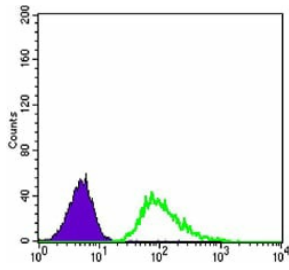
### Images



Western blot analysis using TUBB3 mouse mAb against HepG2 (1), A549 (2) and HeLa (3) cell lysate.



Immunofluorescence analysis of PANC-1 cells using TUBB3 mouse mAb (green). Blue: DRAQ5 fluorescent DNA dye. Red: Actin filaments have been labeled with Alexa Fluor-555 phalloidin.



Flow cytometric analysis of A549 cells using TUBB3 mouse mAb (green) and negative control (purple).

### Storage

Store at 4°C short term. Aliquot and store at -20°C long term.

501 Changsheng S Rd, Nanhu Dist, Jiaxing, Zhejiang, China

Tel: 86 21 31007137 | E-mail: [save@bt-laboratory.com](mailto:save@bt-laboratory.com) | [www.bt-laboratory.com](http://www.bt-laboratory.com)