

## Flag Monoclonal Antibody

### Description

<b>Product type</b>	Antibody
<b>Code</b>	BT-MCA4850
<b>Host</b>	Mouse
<b>Isotype</b>	Mouse IgG2b
<b>Size</b>	100 $\mu$ L, 50 $\mu$ L
<b>Immunogen</b>	Synthetic peptide corresponding to aa(DYKDDDDK), conjugated to KLH.
<b>Mol wt</b>	N/A
<b>Species reactivity</b>	Others
<b>Clonality</b>	Monoclonal
<b>Recommended application</b>	WB,IP,ICC
<b>Concentration</b>	N/A
<b>Full name</b>	N/A
<b>Synonyms</b>	N/A

This product is for research use only, not for use in human, therapeutic or diagnostic procedure.

### Background

The antibody is useful for the identification of proteins with Flag markers at free N-termini and C-termini by common immunological applications in yeast, animal, and E. coli cells.

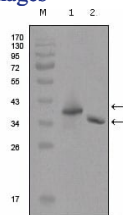
### Recommended Dilution

WB: 1:500 - 1:2000

ELISA: 1:10000

Not yet tested in other applications.

### Images



Western blot analysis using Flag mouse mAb against two different fusion protein (1), (2) with flag tag.

### Storage

Store at 4°C short term. Aliquot and store at -20°C long term.

501 Changsheng S Rd, Nanhu Dist, Jiaxing, Zhejiang, China

Tel: 86 21 31007137 | E-mail: [save@bt-laboratory.com](mailto:save@bt-laboratory.com) | [www.bt-laboratory.com](http://www.bt-laboratory.com)