

MBP Tag Monoclonal Antibody

Description

Product type	Antibody
Code	BT-MCA4858
Host	Mouse
Isotype	Mouse IgG1
Size	100 μ L, 50 μ L
Immunogen	Recombinant fusion protein with Maltose binding protein tag.
Mol wt	N/A
Species reactivity	Others
Clonality	Monoclonal
Recommended application	WB,IP,ICC
Concentration	N/A
Full name	N/A
Synonyms	Mal

This product is for research use only, not for use in human, therapeutic or diagnostic procedure.

Background

Epitope tagging offers an easy and universal strategy for the identification and purification of proteins derived by recombinant DNA technology. The insertion of a Maltose Binding Protein (MBP) tag creates a stable fusion product that does not interfere with the bioactivity of the protein or with the biodistribution of the MBP tagged product. Cleavage by factor Xa separates MBP from its partner protein.

Recommended Dilution

WB: 1:500-1:1000

IHC-p: 1:100 - 1:1000

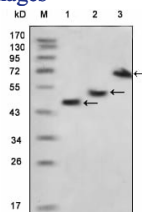
ICC: 1:100 - 1:1000

FCM: 1:200 - 1:400

ELISA: 1:10000

Not yet tested in other applications.

Images



Western blot analysis using MBP mouse mAb against various fusion protein with MBP tag.

Storage

Store at 4°C short term. Aliquot and store at -20°C long term.